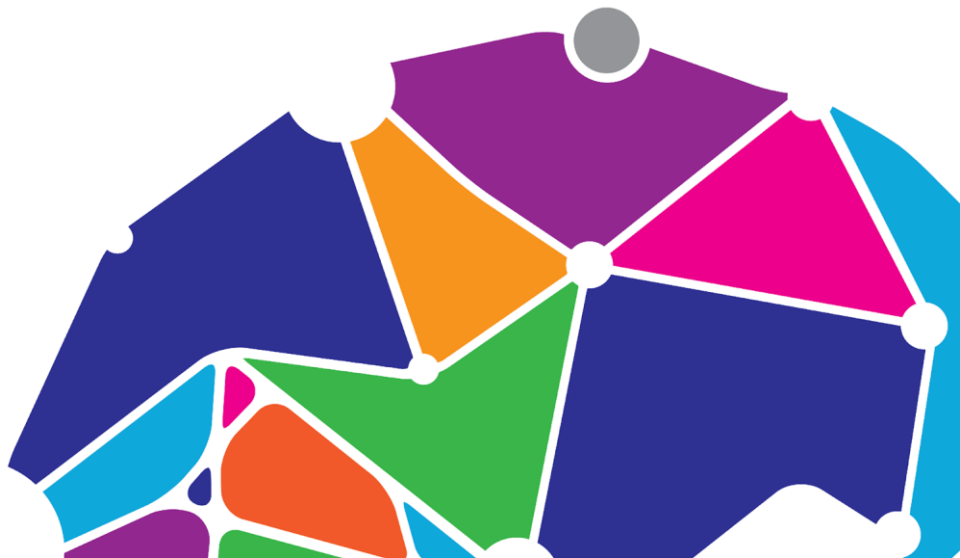




Public Engagement in SIPHER

Dr Ellen Stewart
Centre for Biomedicine, Self & Society
University of Edinburgh



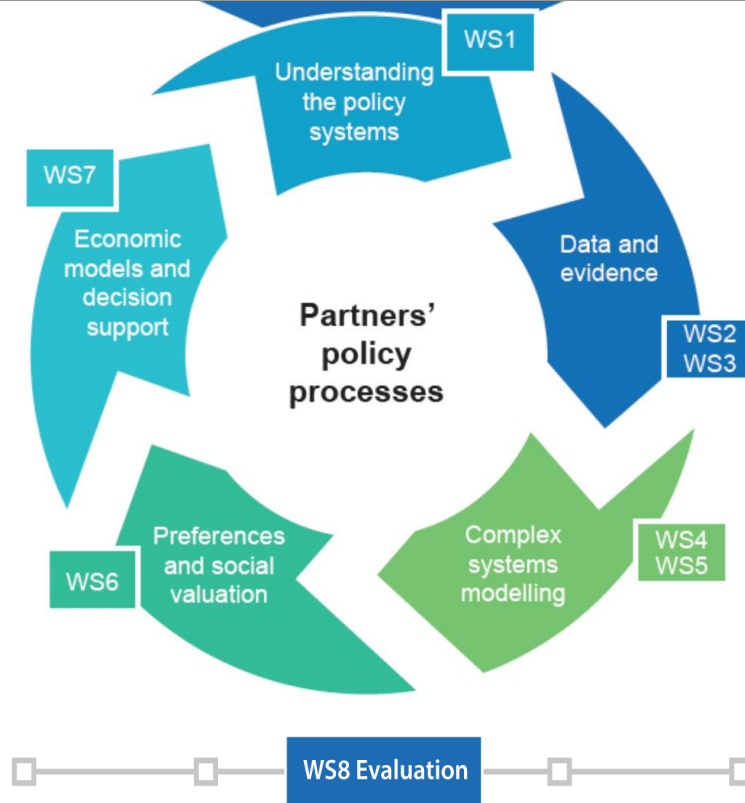
Valuing lived experiences of policy

Emphasising “the worth of subjective experiences to empirical inquiry, and the importance of agency” (McIntosh & Wright 2019)

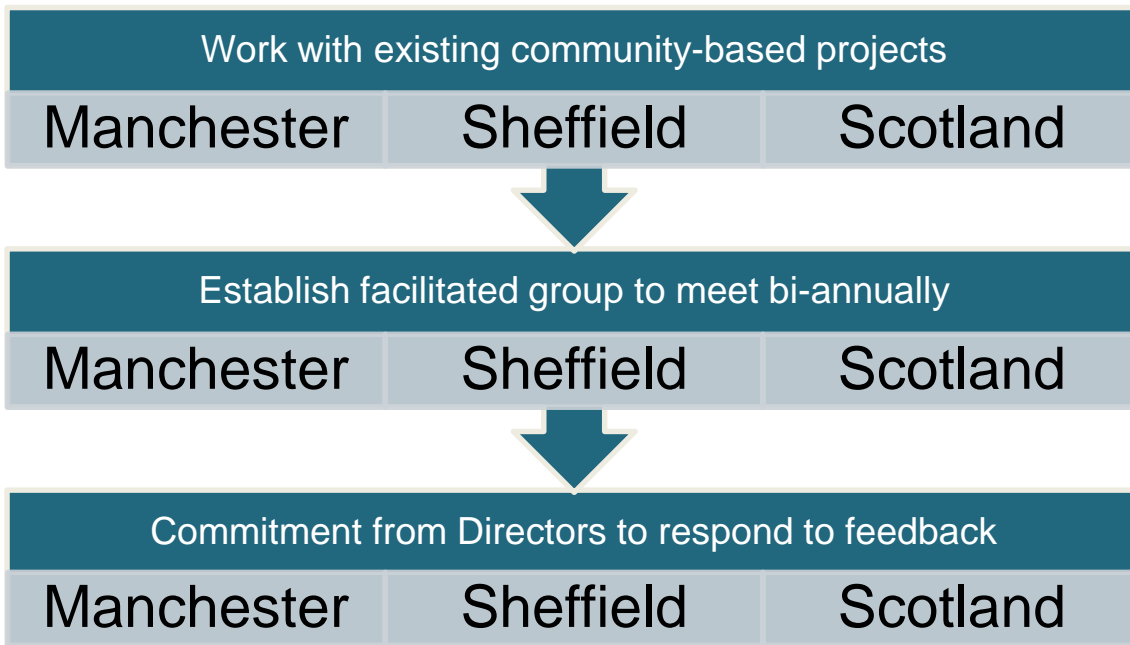
*“We’re used to people talking about us – but it’s rare that people talk **to** us. As a result, the systems that are meant to help us often make things worse.”*
(ADT London 2019)



Engagement within SIPHER



Forward plans (2020-2024)



Aims for the work of the panels

- Place-based: both geographically and by working with community-based organisations
- Inclusive, welcoming spaces tailored to participants (Karpowitz et al (2009))
- Based on interactive, hands-on activities (Freebairn et al 2017)
- Challenging: asking scientists to open up their assumptions for scrutiny (Landstrøm et al 2011)

References

- A Different Take (ADT) London (2019) *Pushing Back: Our take on life in poverty in London*. CPAG & University of Leeds: www.cpag.org.uk
- Freebairn, Louise, Lucie Rychetnik, Jo-An Atkinson, Paul Kelly, Geoff McDonnell, Nick Roberts, Christine Whittall, and Sally Redman (2017) 'Knowledge Mobilisation for Policy Development: Implementing Systems Approaches through Participatory Dynamic Simulation Modelling'. *Health Research Policy and Systems* 15 (1): 83.
- Karpowitz, Christopher F., Chad Raphael, and Allen S. Hammond (2009) 'Deliberative Democracy and Inequality: Two Cheers for Enclave Deliberation among the Disempowered'. *Politics & Society* 37 (4): 576–615.
- Landström, Catharina, Sarah J Whatmore, Stuart N Lane, Nicholas A Odoni, Neil Ward, and Susan Bradley (2011) 'Coproducing Flood Risk Knowledge: Redistributing Expertise in Critical "Participatory Modelling"'. *Environment and Planning A: Economy and Space* 43 (7): 1617–33.
- McIntosh, Ian & Sharon Wright (2019) Exploring what the Notion of 'Lived Experience' Offers for Social Policy Analysis. *Journal of Social Policy* 48(3): 449-467.