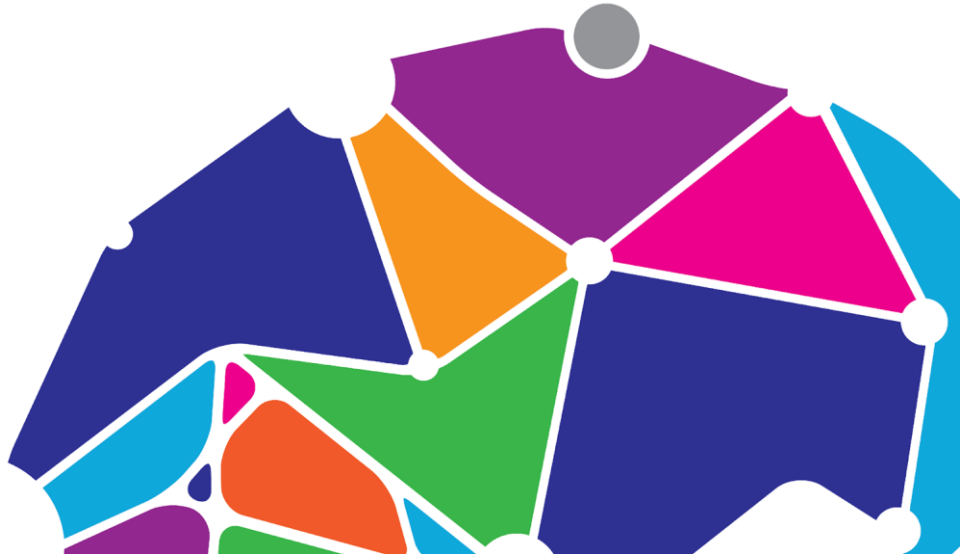
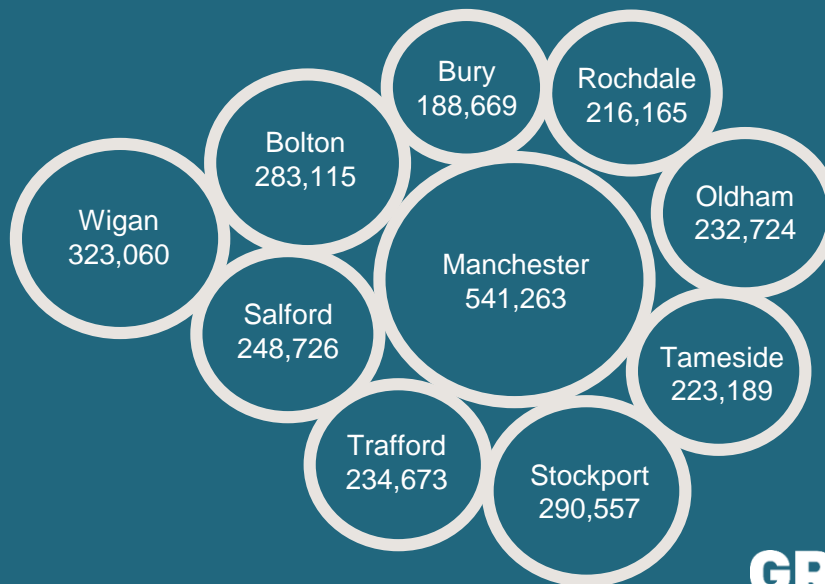




# Greater Manchester Combined Authority – SIPHER policy partner

Julian Cox  
Head of Research  
GMCA





**GREATER  
MANCHESTER**  
**DOING THINGS DIFFERENTLY**

**GREATER  
MANCHESTER  
ECONOMY**  
**£66bn**

**2.8m** people  
**+240,000** since 2000  
**7.2m** in an hour's commute



**1.3m** working in GM  
**+100,000** over  
next 10 years

**COMPARED TO**

**WALES  
ECONOMY**  
**£62bn**

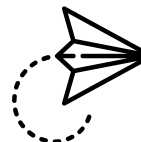
**123,700** businesses,  
best performing city outside  
London for business births



**Over 100,000** Higher  
Education Students  
at four universities

**NORTHERN  
IRELAND  
ECONOMY**  
**£40bn**

Direct flights to over 200  
destinations



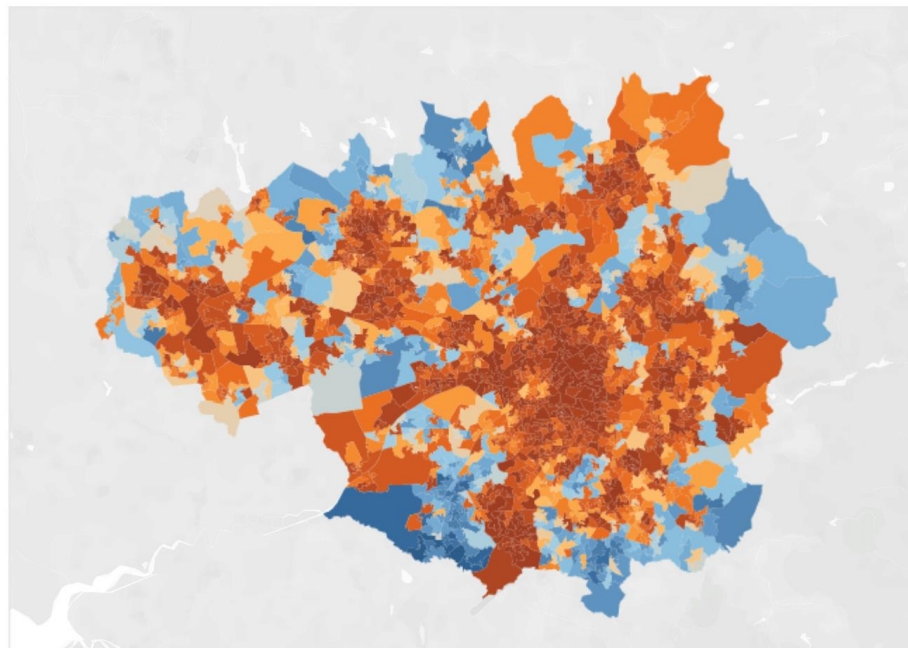
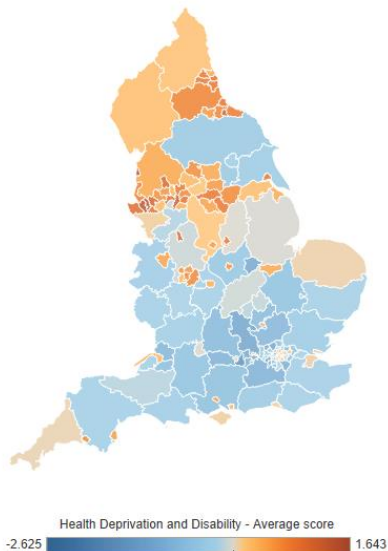
Sector strengths in  
digital/creative, health  
innovation, manufacturing  
& professional services

Source: ONS and GMFM

## But still major issues with health – large inequalities

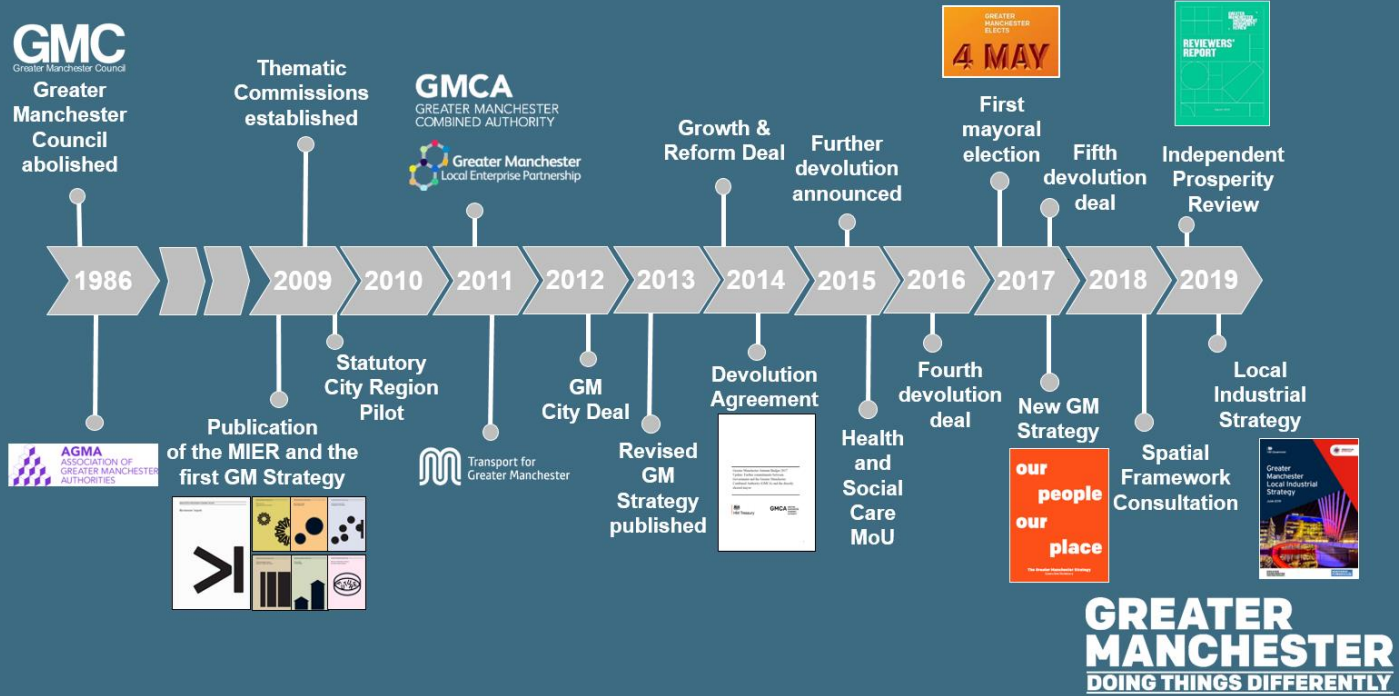
### Health IMD Average Score

Population weighted average of the combined scores for the LSOAs in a larger area (calculated by averaging the LSOA scores in each larger area after they have been population weighted)



Long  
history  
of  
partnership

## GOVERNANCE TIMELINE



# Greater Manchester Strategy



**Let's make**

-  **1**  
Children starting school ready to learn
-  **2**  
Young people equipped for life
-  **3**  
Good jobs for people to progress and develop
-  **4**  
A thriving economy in Greater Manchester
-  **5**  
World-class connectivity

**Greater Manchester**

**one of the best**

-  **6**  
Safe, decent and affordable housing
-  **7**  
A green city for all
-  **8**  
Safe and strong communities
-  **9**  
Healthy lives and quality care
-  **10**  
An age-friendly Greater Manchester

**places in the world**



**GMCA** GREATER  
MANCHESTER  
COMBINED  
AUTHORITY

# Greater Manchester Local Industrial Strategy



# Greater Manchester Spatial Framework







**GMCA** GREATER  
MANCHESTER  
COMBINED  
AUTHORITY

# Greater Manchester Health and Social Care Prospectus



Lots of strategy  
Less money!



Need to prioritise so we maximise  
outcomes across all thematic areas

## Why SIPHER?

Helps us understand the relationships and integrate our strategies


New evidence of what works

Expert academic input

Sophisticated modelling approaches

Embedded researcher

Tools to help decision makers

 Optimising our policy decisions and helping strengthen the case for greater control and integration.

# Challenges

## Definitions

e.g. what do we mean when we say Inclusive Economic Growth?  
How do we collectively agree priorities?

## Data

Have we got enough?  
Information Governance challenges

## Decision making processes

How do we ensure the tools we create are embedded in day to day decision making?

## What does success look like in 5 years time?

Greater understanding



Different approaches to  
decision making



A healthier, happier  
population